

Environmental Performance

The world's population, which was 7.3 billion in 2015, is projected to grow to 9.7 billion by 2050 and to 11.2 billion by 2100.* Global GDP is also continuing to expand, aggravating a host of environmental problems, including global warming caused by higher CO₂ emissions from fossil fuel consumption, the depletion of resources due to increased demand, and ecosystem destruction. Global-scale efforts are being made to develop approaches that lighten the burden on the environment so that a prosperous planet can be passed on to future generations.

Hitachi strives to achieve a more sustainable society by addressing environmental problems, which pose a major challenge for society, based on its corporate mission of contributing to society through the development of superior, original technology and products.

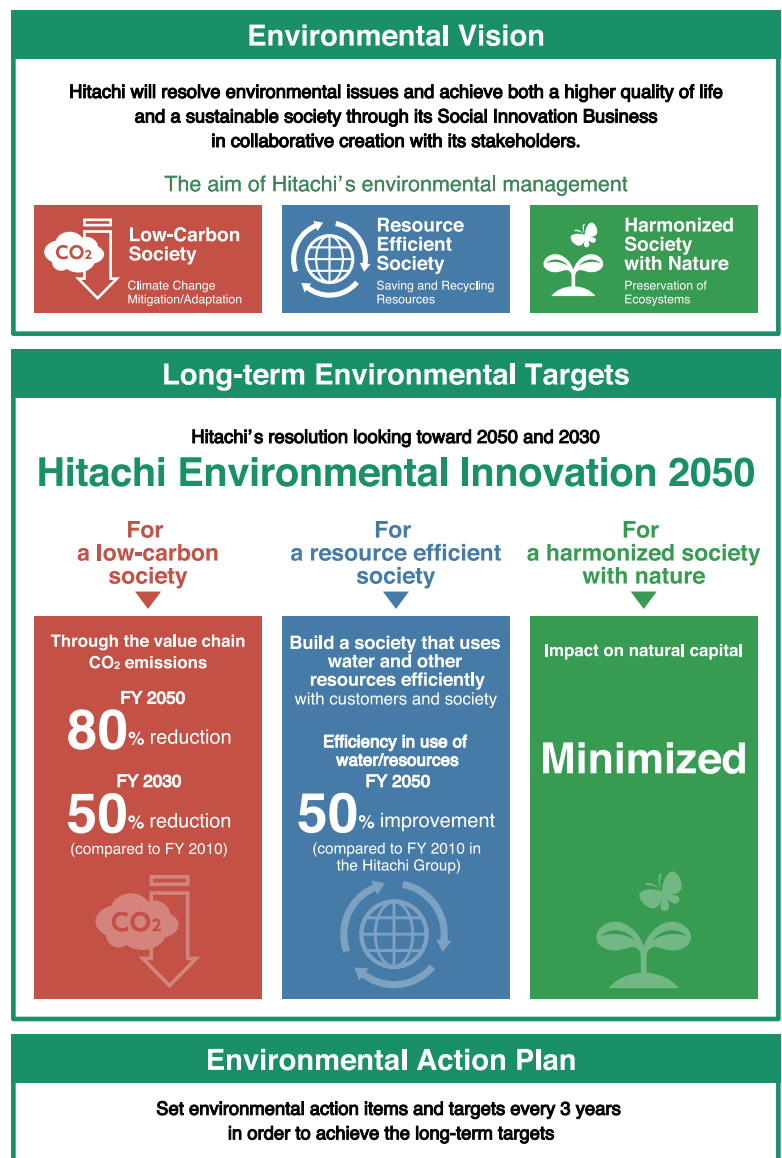
* According to *World Population Prospects: The 2015 Revision*, published by the United Nations.

The Environmental Vision and Hitachi Environmental Innovation 2050

As global warming, resource depletion, ecosystem destruction, and other environmental issues grow more serious, companies face increasing demands and expectations to reduce the environmental burden of their business activities.

The Intergovernmental Panel on Climate Change (IPCC) concluded that limiting global warming “below 2°C relative to pre-industrial levels” would require “40 to 70% global anthropogenic GHG emissions reductions by 2050 compared to 2010.” The Paris Agreement adopted in December 2015 at the 21st Conference of the Parties (COP21) to the United Nations Framework Convention on Climate Change—and which came into force in November 2016—set ambitious targets, including a global long-term target of keeping global warming to below 2°C and efforts to limit the increase to 1.5°C. Environmental targets have also been set in the Sustainable Development Goals (SDGs)—the centerpiece of the 2030 Agenda for Sustainable Development, adopted by the United Nations in 2015—whose Goal 13 reads: “Take urgent action to combat climate change and its impacts.”

In the light of these global trends and our own management policy, we created an Environmental Vision to better define the kind of society that Hitachi envisions from a long-term perspective. Our Environmental Vision envisions a low-carbon society; a resource efficient society; a harmonized society with nature. To achieve such a sustainable society, we established a set of long-term environmental targets called Hitachi Environmental Innovation 2050.



Hitachi Environmental Innovation 2050
<http://www.hitachi.com/environment/vision/innovation2050.html>